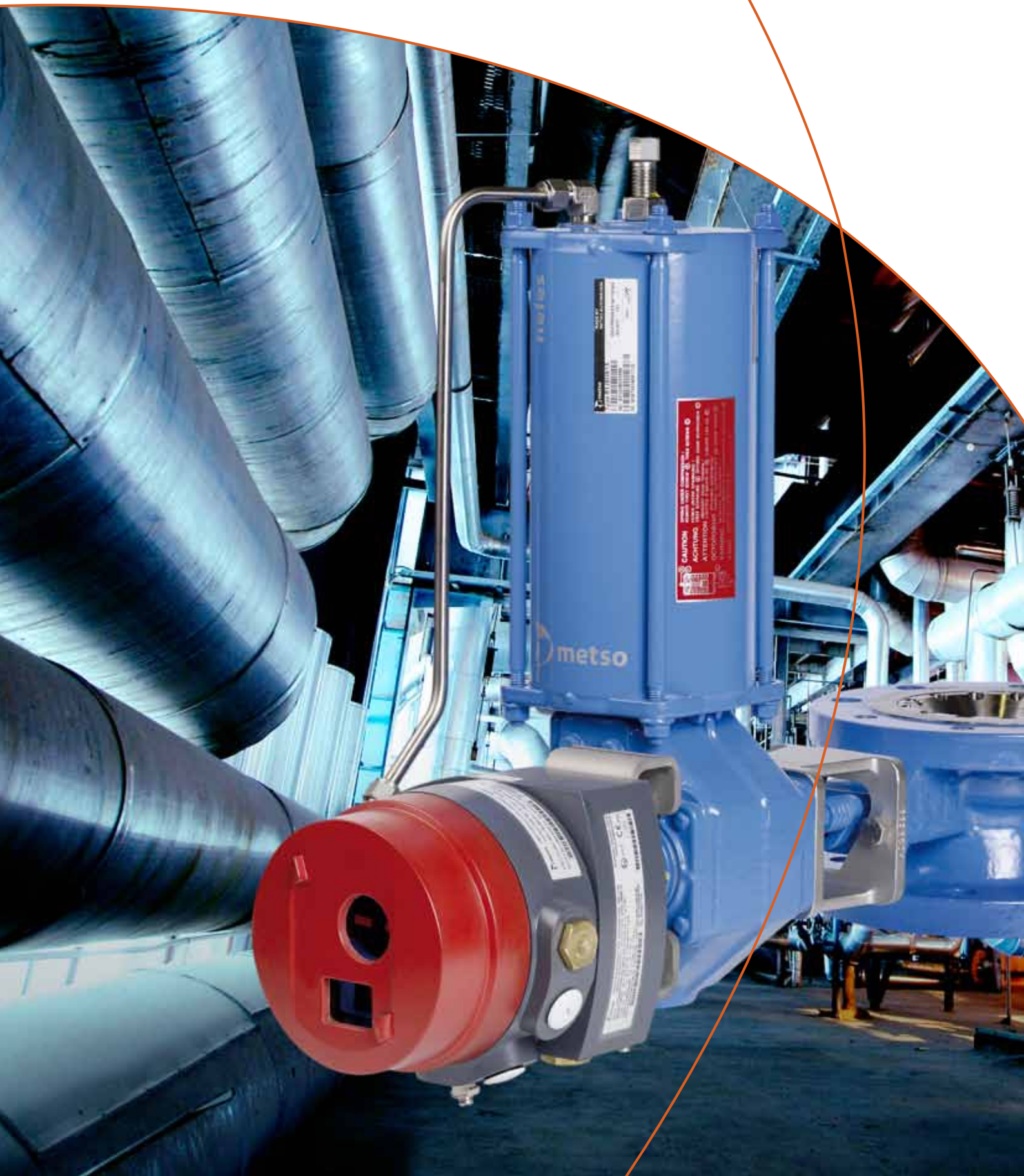


Neles ValvGuard™ VG9000
Increasing safety cost-effectively





Stainless steel version

Neles ValvGuard VG9300 Stainless Steel version is a new addition to the ValvGuard family of intelligent safety valve controllers. VG9300 is manufactured in a stainless steel housing and developed for use in corrosive environments, especially offshore applications.



Neles ValvGuard™ VG9000 - New generation safety valve controller

Neles ValvGuard™ VG9000 is the latest addition to Metso's successful range of valve controllers. Providing increased safety in the most cost-effective way, the new safety valve controller and partial stroke test device for emergency shutdown valves is available both for HART and FOUNDATION fieldbus environments.

High reliability and safety

Plant safety is increased by the Neles VG9000's extensive safety-valve testing capabilities and improved diagnostics data. It features automatic Partial Stroke Test (PST), emergency trip test and internal pneumatics test. The safety valve's condition can be continuously monitored using the diagnostic data retrieved from the performed tests. Extra instrumentation and parallel limit-switch mounting are unnecessary, because Neles VG9000 has market leading pneumatics capacity and

optional, internal limit switches. VG9000 is TÜV-certified up to SIL3.

Cost-effective solution

In addition to improved safety, VG9000 provides real-time alarm management at no extra extra cost. Furthermore, in the FOUNDATION fieldbus version the number of safety related components has been significantly reduced.

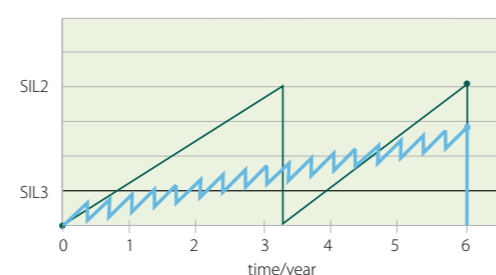
Improved communication

The availability of safety valves is maximized when emergency valve-related online diagnostics are integrated into

device functionality. In addition, FOUNDATION-based emergency-valve controllers give faster response times for status information and provide easier integration of higher tier diagnostic information into the host system. Device usage is also more convenient for the end-user. In the FOUNDATION fieldbus version, the safety part is isolated from the fieldbus part and is powered by a separate 24 V DC signal. The HART version works with a 4 - 20 mA signal, but Digital Output (DO) can be used with a Remote Communication Interface (RCI).

PST testing provides extended plant up-time and enables efficient production in the plant.

- Without online testing safety integrity testing must be performed more often
- With Neles ValvGuard and PST testing plant uptime is extended



Simple to install

- Easy to mount on all kinds of actuators:
 - Single- or double-acting
 - Small or large
- Same unit for linear and rotary valves
- Fast set-up with autocalibration

Economical to use

- Fewer maintainable components
- Diagnostics enables predictive maintenance
- Less engineering work

Improved reliability

- By varying the PST stroke size within set limits, the risk of polymer build-up on the valve surface is reduced during the plant uptime period.

Increased safety

- Operates both in HART and FOUNDATION fieldbus environments
- Extensive safety valve testing capabilities
- Improved diagnostics data
- High pneumatics capacity
- Optional internal limit switches



Europe

Vanha Porvoontie 229, P.O.Box 304
FI-01301 VANTAA
Finland
Tel. +358 20 483 150, fax +358 20 483 151

North America

44 Bowditch Drive, P.O.Box 8044
Shrewsbury, MA 01545
USA
Tel. +1 508 852 0200, fax +1 508 852 8172

South America

Av. Independência, 2500- Iporanga
18087-101, Sorocaba-São Paulo
Brazil
Tel. +55 15 2102 9700, fax +55 15 2102 9748/49

Asia Pacific

20 Kallang Avenue, Lobby B,
#06-00 Pico Creative Centre
339411 Singapore
Tel. +65 6511 1011, fax +65 6250 0830

China

19/F, the Exchange Beijing, No. 118
Jianguo Lu Yi, Chaoyang Dist
100022 Beijing
China
Tel. +86-10-6566-6600, fax +86-10-6566-2575

Middle East

Roundabout 8
Unit AB-07, P.O.Box 17175
Jebel Ali Freezone, Dubai
United Arab Emirates
Tel. +971 4 883 6974, fax +971 4 883 6836

For further information please contact
one of our regional offices, or visit our
web site www.metso.com/valves



Metso Automation Inc.,

Vanha Porvoontie 229, P.O.Box 304 FI-01301 Vantaa Finland, tel. +358 20 483 150, fax + 358 20 483 151, www.metso.com/valves