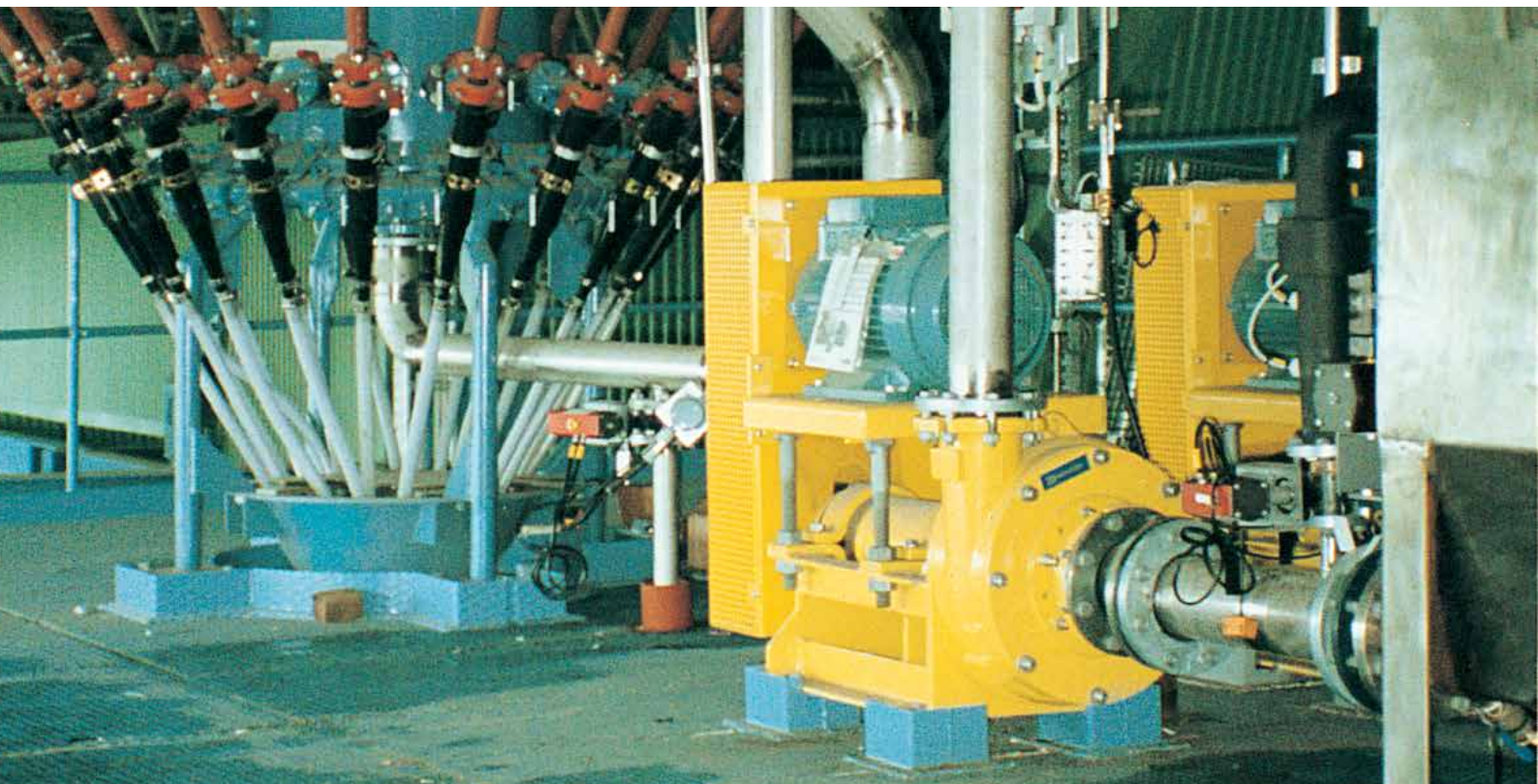


The SALA series of Horizontal slurry pumps type VASA



For
tough
applications





Cyclone feed pumps, VASA 284-100, installed in the belt filter plant, FGD Plant Karlshamns Kraft AB, Sweden

General purpose pump for tough applications

Horizontal slurry pumps type VASA

Design

The shaft and bearing assembly unit is easily replaceable and is adjustable. In connection with the adjustable inlet liner it is possible to maintain optimum clearance on both sides of the impeller. The standard pump is equipped with a gland packed shaft seal and can easily be built with dynamic or mechanical seal.

Wear parts

The VASA pump is equipped with wear parts in soft wear resistant natural rubber or Chrome Iron (SHR), with a hardness of min. 550 HB. A range of different materials is also available such as, Cloroprene, EPDM rubber or Polyurethane. Stainless steel can be supplied for special applications. This selection, together with the various shaft sealing arrangements, makes it possible to adapt the pump for both abrasive and corrosive applications.

Wear parts in different materials are completely inter-changeable i.e. any combination of materials is possible.

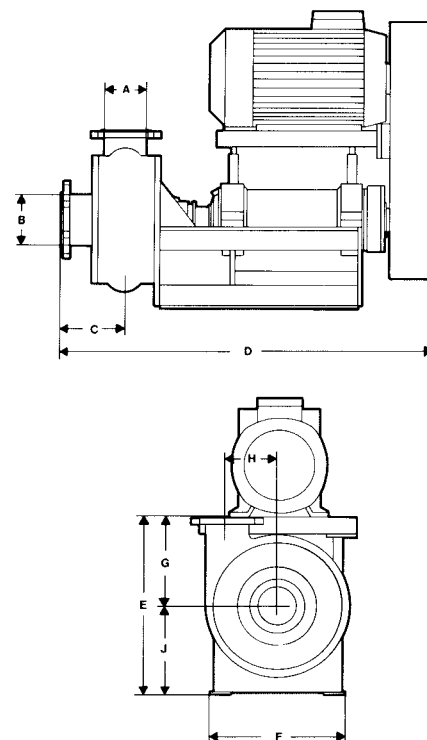
Metso can also offer closed - semi-open - and Vortex Flow impellers for all VASA pumps of size 213-80 and above. The three smallest sizes are only available with semi-open impellers.

Installation

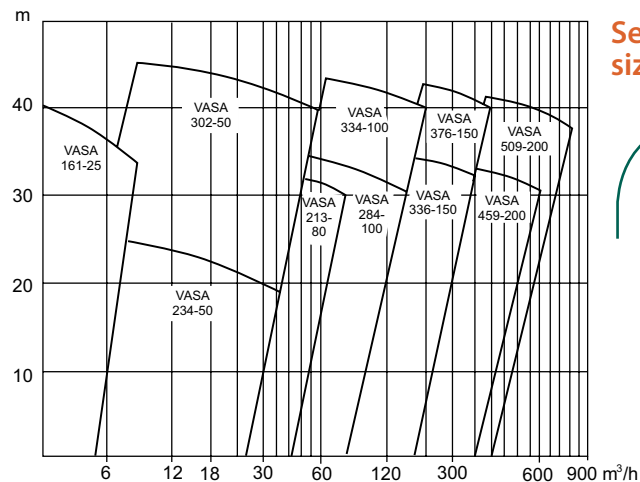
The overhead mounted adjustable motor base plate makes the installation very compact, requires a minimum of floor space and eliminates the need for special foundations.

Applications

The pumps are primarily designed for pumping abrasive slurries and thus their main applications are within the mineral processing industry for transport of solid particles in suspension. The different special material qualities for wear parts also make the pumps suitable for duties with a combination of corrosion and abrasion such as hydro-metallurgical and some heavy chemical applications. The pumps also find many applications within the paper and pulp industry where they are used for pumping of clay, lime caustic sludge, scrubber water, reject pulp, transport of wood chips, etc. The pumps are also installed in various applications in the sugar industry.



VASA 284-100



Selection of pump size

Pump curves and the selection chart below do not include all impeller alternatives.

Motor size

Motor size and V-belt drive varies with the pump duty.

Necessary data for determined pump size and motor power are:

Flow (m³/h) GPM etc.)

Total discharge head (m, ft)

Media density (kg/m³)

Definition of pump

VASA is the type designation and the figures state the size according to the following example:

284 – 100		
Impeller dia in cm	Height of vanes in cm	Discharge connection mm

Pump	Discharge Inlet									Max. motor 4-pol IEC norm*	Weight kg	
	A	B	C	D	E	F	G	H	J		Rubber lined	SHR
VASA 161-25	25	32	55	650	333	285	173	100	160	7,5 kW	74	85
VASA 234-50	50	65	132	785	540	538	230	155	310	15,0 kW	175	195
VASA 302-50	50	65	112	765	540	538	230	180	310	15,0 kW	195	230
VASA 213-80	80	100	178	1108	510	430	250	141	260	30,0 kW	265	300
VASA 284-100	100	125	177	1097	530	430	270	173	260	30,0 kW	280	325
VASA 334-100	100	125	177	1097	530	430	270	173	260	30,0 kW	–	330
VASA 336-150	150	165	223	1243	630	490	300	243	330	45,0 kW	415	525
VASA 376-150	150	165	223	1243	630	490	300	243	330	45,0 kW	420	530
VASA 459-200	200	250	277	1567	830	650	405	309	425	90,0 kW	800	905
VASA 509-200	200	250	277	1567	830	650	405	309	425	90,0 kW	–	915

*) Large motors must be placed on rails next to the pump.

Subject to alteration without prior notice, and approx. only.

- **Metso Minerals (Sweden) AB**
Norrängsgatan 2, SE-733 38 Sala, Sweden, Phone: +46 224 570 00, Fax: +46 224 169 50
- **Metso Minerals Industries Inc.**
4820 Centennial Blvd, Suite 115, Colorado Springs, Co 80919-3351, USA, Phone: +1 719 471 3443, Fax: +1 719 471 4469
- **Metso Minerals Industries Inc.**
P.O. Box 96, Birmingham, AL 35201, USA, Phone: +1 205 599 6600, Fax: +1 205 599 6623
- **Metso Minerals (South Africa) (Pty) Ltd.**
Private Bag X2006, Isando, Johannesburg, 1600, South Africa, Phone: +27 11 961 4000, Fax: +27 11 397 2050
- **Metso Minerals (Australia) Ltd.**
Level 2, 1110 Hay Street, West Perth, WA 6005, Australia, Phone: +61 8 9420 5555, Fax: +61 8 9320 2500
- **Metso Minerals (India) Pvt Ltd**
1th floor, DLF Building No. 10, Tower A, DLF Cyber City, Phase - III, Gurgaon - 122 002, India, Phone: +91 124 235 1541, Fax: +91 124 235 1601
- **Metso Perú S.A.**
Calle 5 Nro. 144, Urb. Industrial Vulcano, Ate, Lima 03, Peru, Phone: +51 1 313 4366, Fax: +51 1 349 0913
- **Metso Minerals (Chile) S.A.**
Av. Los Conquistadores 2758, Piso 3, Providencia, Santiago, Chile, Phone: +56 2 370 2000, Fax: +56 2 370 2039
- **Metso Brasil Indústria e Comércio Ltda.**
Av. Independência, 2500 Éden, 18087-101 Sorocaba-SP - Brazil, Phone: +55 15 2102 1709



www.metso.com
E-mail: minerals.info@metso.com
Pumps information at
www.metso.com/pumps